



www.peaks-water.com
www.nbpeakswater.com

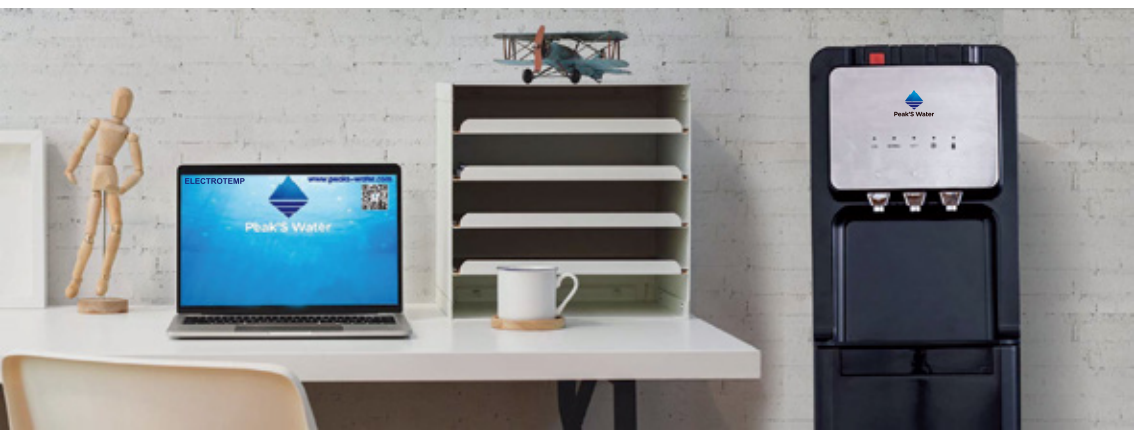
Peak'S Water

ELECTROTEMP *Estratto*





Peak'S water water dispenser Believe in the power of the professional



NEW

ice-maker

Water Cooler With Ice Maker

Ice maker with cold and hot water

Three ice cube size can be selected

Internally installed safety device

- When water shortage, power off automatically
- When ice cube storage space is full, ice tube stop making
- Semi-automatic ice maker and Automatic ice maker can be option



NEW
New design

New design water dispenser

Water dispenser
Small bucket of water
Bottom Loading

- Touch button easy to get water
- Light simple and easy to understand





Mini Water Dispenser

- Compact appearance, saving space
- Top loading, water bottle less than 5L can be used
- Four suckers in the bottom ensures stability
- Two water temperature can be chosen
- Various colors are available

Multi-stage filter elements
to purify water
Connect to the city water
directly
Provide hot water and cold
water, both are healthy and
power saving
Top loading water bottle
can be option



Mini Water Dispenser

Compact appearance, saving space
Top loading, water bottle less than 6L can be used
Two water temperature can be chosen
Various colors are available





ELECTROTEMP TECHNOLOGIES CHINA INC. is specialized in producing water dispenser, supplying OEM branded products to Global 500.

220,500 square feet State-Of-The-Art facility with over 2,500 coolers per day capacity.

The company is engaged in designing and manufacturing technologically advanced water dispenser, their components and other related products.





Radio-frequency welding



Safety inspection



Assemble



Charging refrigerant



Gas leak inspection



Functional inspection



Certification

CE

RoHS CE

ISO

CSA

Supplier
Assessment

CB

SAA

Patents Issued and Patents Pending

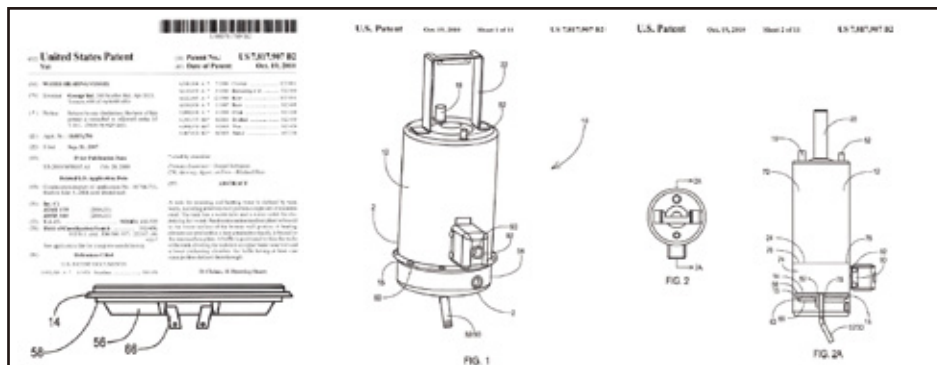
Patents:

We treat continuous innovation as our passion.

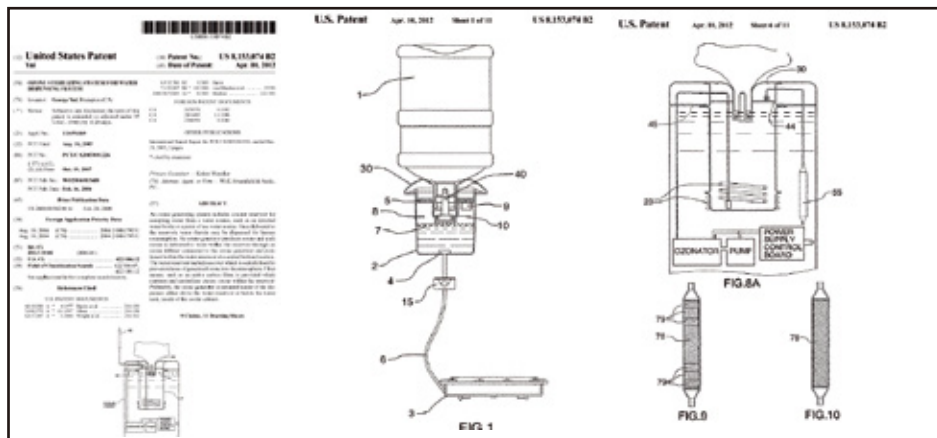
We have nearly hundred patented and patents pending designs. Including Appearance Patents, Invention Patents and Technology Patents.

- Example
1. Hot Water Tank Design
 2. Self Clean.
 3. Non-leakage Bottle Receptacle.

Patent—Hot water tank

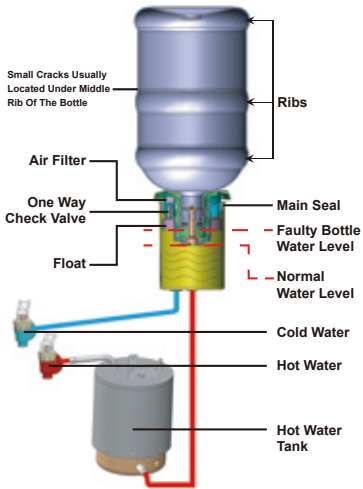
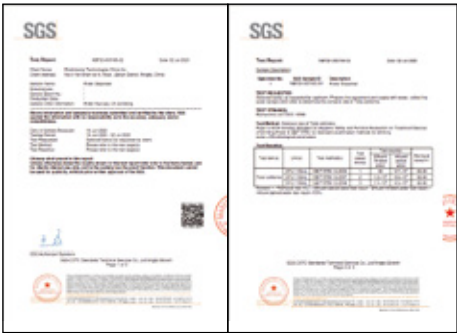
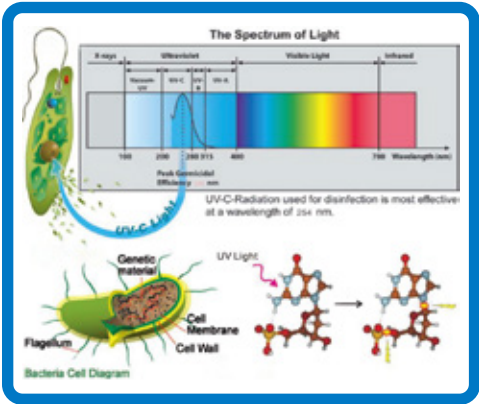


Patent—Self Cleaning



UV Sanitizing

The UVC LED light source used in our products has many advantages over the traditional UV sterilized mercury lamp. Firstly, the UVC band excited by LED is concentrated at 270nm±5nm. Secondly, as a wading part, its environmental performance is much better than mercury lamp. Finally, the working life is much longer than the traditional mercury lamp.



No- Leak Guard Bottle Receptacle

Ordinary receptacle can only receive bottle and open bottle cap to allow water flow. It will not stop water from flooding your floor in case of failure.

1. No-Leak Bottle Receptacle stops floor damage due to leaking faulty bottles.
2. It filters incoming air through well protected air filter located inside of receptacle.
3. It does all other functions of the regular bottle receptacle.

Hot Water Tank

Hot water tank with the bottom brazed external heater is good for use with mineral water. Fast acting High Limit Switch allows Dry Plug In without any ill effects. High temperature fuse is used for an additional protection. Low watt density heater is gentle on minerals. Do not create hard crust inside of hot tank. Easy to de-scale using white vinegar.



**MORE COLD WATER
WITH ICE CHILL™ RING**

**Ice Bank provides constantly
ice cold water at 4 °C / 40 °F
on the standby.**

Our patented system cools water powerfully. Because ice chills water so quickly, it produces a larger volume of cold water. The water is also much colder, which means it tastes better. The core feature of a water cooler is it's cold water, and we have high customer

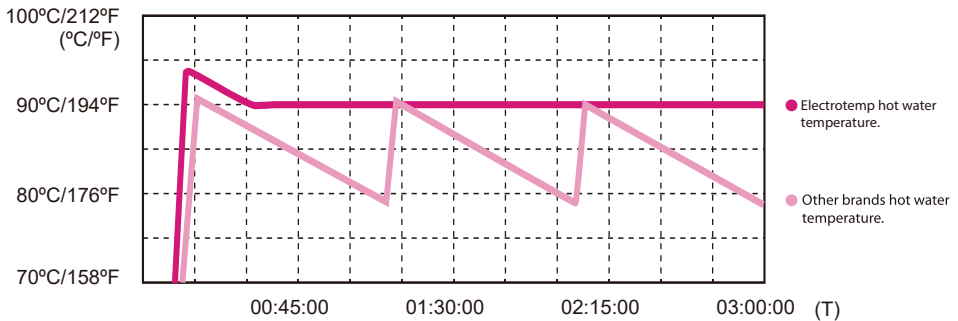


How does SELF CLEAN™ system work?

Ozone is pumped into the water reservoir above water level periodically. It forms a Sanitary Shield Protection layer of Ozone that protects water and internal surfaces of water dispenser from forming bacteria rich slimy substance.

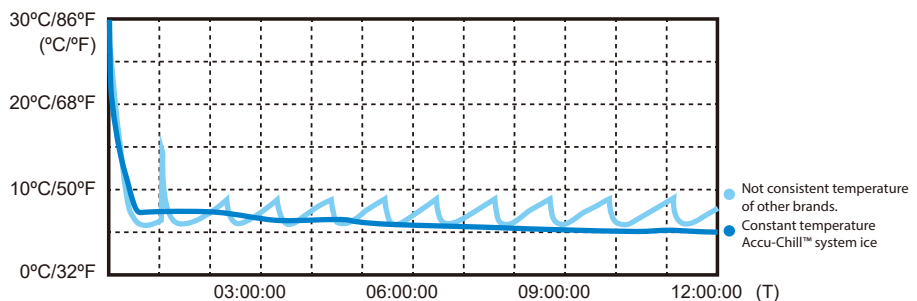
Constant Temperature Hot Water

Constant hot water temperature is without any variations though out the day on the standby.
Factory set at 194 °F, can be customized via display to constant 149 °F to 203 °F



Above chart shows Peak's Water Thermoregulator™ constant 90 °C / 194 °F temperature usually coolers have severe drops in hot water temperatures.

Constant Temperature Cold Water



Water temperature is at constant 4 °C / 40 °F, while on standby basis. Reviews of other brands show people comparing cold water out of their own fridge at 4 °C / 40 °F to much warmer 10 °C / 50 °F out of an ordinary water cooler.

NEW

Bottom Loading water dispenser

New design water dispenser

Unique appearance design
Three heating power save energy
Brita Alkaline filter element to
improve the taste of water



Touch button easy to get water



Delicate and LCD display design



NEW
*Single Serve Coffee
Brewer & Water cooler*

Constant Steaming Hot Water
**Single Serve Coffee Maker
and Water Cooler**

**Steaming hot water makes rich, full
flavored coffee out of regular Cup
pack with your choice of bottled**



Applicable: Freshly ground coffee powder and 3 kinds of capsules, Including Nespresso, Dolce Gusto, K-cup.



18KGS pressure by constant steaming hot water instantly penetrate the coffee powder,



X-Cold technology uses ice to chill the water to the lowest average temperature in the industry.



Combines the benefits of premium quality water with gourmet coffee to make a delicious cup of coffee.



Water Cooler, Regular Cabinet Size



Model: 8LCH-EP-SSD Model: 8LCH-KK-SC-SSF Model: 8LCH-KK-SC-SSP

Description	Voltage	Heating Power	Hot Tank Volume	Cold Tank Volume	Hot Water Output	Cold Tank Output
	120V/60Hz or 220V/50~60Hz	1400W	1.2L / 0.32 Ga	3.5L / 0.92 Ga	9L / 2.38 Ga (constant 90°C/194°F, electronic control)	6L / 159 Ga (constant 4°C/40°F, electronic control)
	Certified	Compressors	20 / 40 GP Loading Qtys	Product Size	Packing Size	
	CE, CSAus, CB	70W, Max:<100W	192 / 396	32x38.2x105.6 (cm) 12.6x15x41.6 (inch)	38x40.5x114 (cm) 15x15.9x44.9 (inch)	

- Choice UFPOU or Alkaline filter
- Available in Automatic Hot Water Sanitizing, Ozone Self Clean, UV sanitizing

Sparkling Water Cooler

Sparkling

Soda water temperature between 1°C and 10°C

Sparkling water output 9.5L per hour at CO_2 concentration 7gram/L

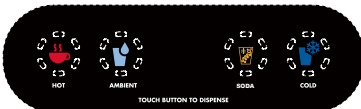
Touch Buttons

Cold, Ambient and Hot Waters with Display

Easy Start Up

no gas mixing procedure required

• Hot Ambient Soda Cold



• Safety Lock Hot Soda Cold



Sparkling Water Cooler

Bottom Loading with display



Model: 8HDSCHA-SC-SSF



Model: 8HDSCHA-SC-SSM

Description	Voltage	Hot Tank Volume	Cold Tank Volume	Sparkling Output	Hot Water Output	Cold Tank Output
	120V/60Hz or 220V/50~60Hz	1.2L / 0.32 Ga	2.5L / 0.66 Ga	15L / 2.64 Ga (1°C-10°C / 33.8°F-50°)	6L / 1.59 Ga (>80°C/176°F, mechanical control) or (constant 90°C/194°F, with electronic control)	9L / 2.38 Ga (<10°C/50°F, mechanical control) or (constant 4°C/40°F, with electronic control)
	Heating Power	Certified	Compressors	20 / 40 GP Loading Qty's	Product Size	Packing Size
	425W/650W	CE, CSAus, CB	70W, Max:<100W	168 / 336	32x38.2x112 (cm) 12.6x15x44.1 (inch)	38x42.5x123 (cm) 15x16.7x48.4 (inch)

Outputs: Cold, Soda, Ambient and Hot Waters

Sparkling water temperature: 1 °C to 6 °C

Sparkling water output: 9.5 L per hour

Carbonation density 7 gram / L

Hot Item
Filter & Sterilization
Water Cooler

Four-stage filtration and three-stage sterilization Water Cooler with display



This cooler is equipped with:

- 4 stages filtration system: Sediment, Pre-carbon, UF membrane, Post-carbon
- 3 sanitizing methods: Full automatic ozone self cleaning, Adjustable hot water sanitizing, and UV sanitizing after last stage of filtration system.
- Bottom loading, easy to fill the source of water. City water inlet is optional as well.
- New style touch dispensing button
- One dispensing nozzle integrated
- Hot, cold, ambient water output



	Voltage	Heating Power	Hot Tank Volume	Cold Tank Volume	Hot Water Output	Cold Tank Output
Description	120V/60Hz or 220V/50~60Hz	425W/650W	1.2L / 0.32 Ga	4L / 1.06 Ga	6L / 1.59 Ga (>80°C/176°F, mechanical control) or (constant 90°C/194°F, with electronic control)	4L / 1.06 Ga (<10°C/50°F, mechanical control) or (constant 4°C/40°F, with electronic control)
	Certified	Compressors	20 / 40 GP Loading Qtys	Product Size	Packing Size	
	CE, CSAus, CB	70W, Max:<100W	192 / 396	32x38.2x111.8 (cm) 12.6x15x44 (inch)	35.8x38.8x116.5 (cm) 14.1x15.3x45.9 (inch)	

Hot Item
Filter Water Cooler

Electrotemp Top-Level Point - Of - Use Cooler

High-End POU Cooler. Built to last automatic hot water sanitizing UV

Ozone self cleaning, full stainless steel front, capacitive digital display, 4 stage RO filter. The modern design will appeal to your customers, an attractive compliment to their kitchens or offices.

This cooler is equipped with:

- Hot, and Cold water temperatures. Water temperature is fully adjustable on the model with the programmable display
- Child Safety latch on the hot water tap to prevent accidents
- Faucet lock out during hot water sanitizing cycle.
- Built-in leak detection system to provide peace of mind
- Automatic shut off in case of leak
- 2 Gallon cold water reservoir with separate hot water tank
- External heating cement
- Available UF, Carbon or RO filtration systems
- Simple to use filters with swivel head. Replace by 1/4 turn and pull.
No unsightly and unreliable PE tubing to connect filters together
- Many other features and options are available



Water Cooler with Filters



Model:
75IECHK-SC-SSF-UFPOU



Model:
8LIECH-SSF-UFPOU



Model:
8LDIECH-SSF-ROPOU



Model:
8LIECHK-SC-SSF-5L-ROPOU

Description	Voltage	Heating Power	Hot Tank Volume	Cold Tank Volume	Hot Water Output	Cold Tank Output
	120V/60Hz or 220V/50~60Hz	425W/650W	1.2L / 0.32 Ga	3L / 0.8 Ga 4L / 1.06 Ga	6L / 1.59 Ga (>80°C/176°F, mechanical control) or (constant 90°C/194°F, with electronic control)	4L / 1.06 Ga (<10°C/50°F, mechanical control) or (constant 4°C/40°F, with electronic control)
	Certified	Compressors	20 / 40 GP Loading Qtys	Product Size	Packing Size	
	CE, CSAus, CB	70W, Max:<100W	192 / 396	29.7x32.2x102 (cm) 11.7x12.7x40.2 (inch) 32x38.2x102.8 (cm) 12.6x15x40.5 (inch)	35.8x38.8x114.8 (cm) 14.1x15.3x45.2 (inch)	

- Choice ROPOU or UFPOU
- Available in Automatic Hot Water Sanitizing, Ozone Self Clean, UV sanitizing

Alkaline Water Cooler Bottom Loading



Model: 8LDIECH-SC-WFC-SSF



**NEW Model:
8LDIECHK-WFC-2-SSD**

Description	Voltage	Heating Power	Hot Tank Volume	Cold Tank Volume	Hot Water Output	Cold Tank Output
	120V/60Hz or 220V/50~60Hz	425W/650W	1.2L / 0.32 Ga	4L / 1.06 Ga	6L / 1.59 Ga (>80°C/176°F, mechanical control) or (constant 90°C/194°F, with electronic control)	4L / 1.06 Ga (<10°C/50°F, mechanical control) or (constant 4°C/40°F, with electronic control)
	Certified	Compressors	20 / 40 GP Loading Qtys	Product Size	Packing Size	
	CE, CSAus, CB	70W, Max:<100W	192 / 396	32x38.2x102.8 (cm) 12.6x15x40.5 (inch)	35.8x38.8x114.8 (cm) 14.1x15.3x45.2 (inch)	

- Available in Automatic Hot Water Sanitizing, Ozone Self Clean, UV sanitizing
- Alkaline filter to deliver 7.5~8 pH water good for over 50 x 5 gallon bottles.
- Automatic countdown to filter change

Induction Smart Water Cooler

Top view of buttons



- **Touchless button**
No need to touch with hands to avoid bacterial infection
- **Three independent water outlets**
Hot water, cold water, ambinate water
- **Easy to use**

Description	Voltage	Heating Power	Hot Tank Volume	Cold Tank Volume	Hot Water Output	Cold Tank Output
	120V/60Hz or 220V/50~60Hz	425W/650W	1.2L / 0.32 Ga	4L / 1.06 Ga	6 L / 1.59 Ga (constant 80°C / 194°F, electronic control)	4 L / 1.06 Ga (constant 4°C / 40°F, electronic control)
	Certified	Compressors	20 / 40 GP Loading Qtys	Product Size	Packing Size	
	CE, CSAus, CB	70W, Max:<100W	192 / 396	32x36.6x102.8 (cm) 12.6x14.4x40.5 (inch)	35.8x38.8x114.8 (cm) 14x15.3x45.2 (inch)	

Innovative & Unique Ozone-Self cleaning introduction

Areas of the cooler that are sanitized by the Self - Cleaning feature include the cold water tank, cold tank cover with water level controls, cold water faucet up to the dispensing nozzle and surrounding connectors. Includes 5 gallon bottle and probe for drawing water out of the bottle.

These parts of your cooler are automatically treated with metered amounts of ozone every 4 hours to eliminate bacteria growth. This process is exclusive to Electrotemp Technologies China Inc. and is covered by numerous patents.

Ozone is pumped into the water reservoir periodically. It forms a Sanitary, Protective Shield layer of Ozone that protects water and internal surfaces of the water dispenser from forming bacteria which is a rich slimy substance.

Ozone has good sanitizing capabilities and does not require additions of any other substances to assist in the cleaning process. Reliable construction assures longevity if the Self-Cleaning system. However, there are some parts of the cooler that the Self - Clean feature does not sanitize.



Self Clean Bottom Loading with One Dispensing Nozzle



Model: 8LIECHK-SC-BS-1N5W

Model: 8LIECH-SC-SSF-5L

Model: 8LDIECH-SC-SSP

Description	Voltage	Heating Power	Hot Tank Volume	Cold Tank Volume	Hot Water Output	Cold Tank Output
	120V/60Hz or 220V/50~60Hz	425W/650W	1.2L / 0.32 Ga	4L / 1.06 Ga	6L / 1.59 Ga (>80°C/176°F, mechanical control) or (constant 90°C/194°F, with electronic control)	4L / 1.06 Ga (<10°C/50°F, mechanical control) or (constant 4°C/40°F, with electronic control)
	Certified	Compressors	20 / 40 GP Loading Qtys	Product Size	Packing Size	
	CE, CSAus, CB	70W, Max:<100W	192 / 396	32x38.2x102.8 (cm) 12.6x15x40.5 (inch)	35.8x38.8x114.8 (cm) 14.1x15.3x45.2 (inch)	

- Available in Self Clean with Ozone generator
- Automatic Ozone injection certified to release less then 50 ppb or Ozone into ambient air.
- Prevents Biofilm build up. Protects original quality of bottled water. Does not alter mineral content or taste.

Self Clean Bottom Loading



Model: 8LIECH-SC-SSD Model: 8LIECH-SC-SSF-5L Model: 8LDIECH-SC-SSP

Description	Voltage	Heating Power	Hot Tank Volume	Cold Tank Volume	Hot Water Output	Cold Tank Output
	120V/60Hz or 220V/50~60Hz	425W/650W	1.2L / 0.32 Ga	4L / 1.06 Ga	6L / 1.59 Ga (>80°C/176°F, mechanical control) or (constant 90°C/194°F, with electronic control)	4L / 1.06 Ga (<10°C/50°F, mechanical control) or (constant 4°C/40°F, with electronic control)
	Certified	Compressors	20 / 40 GP Loading Qtys	Product Size	Packing Size	
	CE, CSAus, CB	70W, Max:<100W	192 / 396	32x38.2x102.8 (cm) 12.6x15x40.5 (inch)	35.8x38.8x114.8 (cm) 14.1x15.3x45.2 (inch)	

Basic Bottom Loading Type



Model: 8LIECH-WP



Model: 8LIECH-BP



Model: 8LIECH-SC-SSF

Optional Parts and Function	UV Lamp	Alkaline water	Self Clean	Constant Hot Water	Energy Star 2014	Constant Hot and Cold Water
	Optional	Optional	Optional	Optional	Optional	Optional
	LED Indicators	External Heater	Display	Stainless Steel Welded Cold Tank	Stainless steel drip tray grill	Stainless steel front panel
	Optional	Optional	Optional	Optional	Optional	Optional
Description	Nickel Plated Button	Nickel Plated Drip Tray	Storage Cabinet	Constant Hot Water and Energy Star	LED Night Light	
	Optional	Optional	Optional	Optional	Optional	
	Voltage	Heating Power	Hot Tank Volume	Cold Tank Volume	Hot Water Output	Cold Tank Output
	120V/60Hz or 220V/50~60Hz	425W/650W	1.2L / 0.32 Ga	4L / 1.06 Ga	6L / 1.59 Ga (>80°C/176°F, mechanical control) or (constant 90°C/194°F, with electronic control)	4L / 1.06 Ga (<10°C/50°F, mechanical control) or (constant 4°C/40°F, with electronic control)
	Certified	Compressors	20 / 40 GP Loading Qty's	Product Size	Packing Size	
	CE, CSAus, CB	70W, Max:<100W	192 / 396	32x38.2x102.8 (cm) 12.6x15x40.5 (inch)	35.8x38.8x114.8 (cm) 14.1x15.3x45.2 (inch)	

Top Loading Tall Cabinet



Model:
75IECH-WP



Model:
75IECH-HWS-SSF-4L



Model:
75IECHK-SCD-SSF-ST

Optional Parts and Function	Self Clean	No Leak Bottle Receptacle	Constant Hot Water	Stainless Steel Welded Cold Tank	External Heater	Energy Star 2014
	Optional	Optional	Optional	Optional	Optional	Optional
	Nickel Plated Button	Nickel Plated Drip Tray	Storage Cabinet	Stainless Steel Drip Tray Grill	Display	LED Night Light
	Optional	Optional	Optional	Optional	Optional	Optional
Description	Voltage	Heating Power	Hot Tank Volume	Cold Tank Volume	Hot Water Output	Cold Tank Output
	120V/60Hz or 220V/50~60Hz	425W/650W	1.2L / 0.32 Ga	3.0L / 0.8 Ga total, 1.8L/ 0.48 Ga actual	6L / 1.59 Ga (>80°C/176°F, mechanical control)	4L / 1.06 Ga (<10°C/50°F, mechanical control)
	Certified	Compressors	20 / 40 GP Loading Qtys	Product Size	Packing Size	
	CE, CSAus, CB	70W, Max:<100W	192 / 396	29.7x32.2x102 (cm) 11.7x12.7x40.2 (inch)	33x36x108 (cm) 13x14.2x42.4 (inch)	

Top Loading Bottle Type, Compact Size



Model: 7LIECH-W



Model: 7LIECH-B



Model: 7LIECH-SSF

Optional Parts and Function	Self Clean	No Leak Bottle Receptacle	Constant Hot Water	Stainless Steel Welded Cold Tank	Energy Star 2014	External Heater
	Optional	Optional	Optional	Optional	Optional	Optional
	Nickel Plated Button	Nickel Plated Drip Tray	LED Night Light	Constant Hot Water And Energy Star	Constant Hot and Cold Water	
Description	Optional	Optional	Optional	Optional	Optional	
	Voltage	Heating Power	Hot Tank Volume	Cold Tank Volume	Hot Water Output	Cold Tank Output
	120V/60Hz or 220V/50~60Hz	425W/500W	1.2L / 0.32 Ga	3.0L / 0.8 Ga total, 1.5L / 0.4 Ga actual	4L / 1.06 Ga (>80°C/176°F, mechanical control)	4L / 1.06 Ga (<10°C/50°F, mechanical control)
	Certified	Compressors	20 / 40 GP Loading Qty's	Product Size	Packing Size	
	CE, CSAus, CB	70W, Max:<100W	252 / 518	27.5x28.6x91.3 (cm) 10.83x11.26x36 (inch)	31x32x100 (cm) 12.2x12.6x39.4 (inch)	

ELECTROTEMP

TECHNOLOGIES CHINA INC.

No. 9 Yanshanhe N. Road
Beilun, Ningbo, Zhejiang, 315800, China
www.peaks-water.com

Tel: 86-180-6919-5792
E-mail: sales01@peaks-water.com

Tel: 86-180-6919-5871
E-mail: sales02@peaks-water.com

Tel: 86-180-6919-2638
E-mail: sales03@peaks-water.com

Tel: 86-180-6919-7629
E-mail: sales05@peaks-water.com

Tel: 86-189-6989-6799
E-mail: sales@peaks-water.com

Tel: 86-189-6822-2522
E-mail: gm@peaks-water.com



www.peaks-water.com
www.nbpeakswater.com